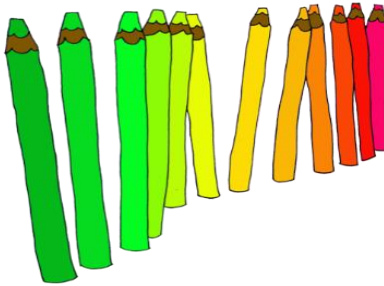


Weekly Newsletter



Barlby Primary School

Date: 23rd October 2020

Letter: 8

Our social media feeds are updated regularly. Please follow us:

Instagram: [barlbyprimary](#)

Twitter: [@primary_barlby](#)

Thank you for supporting us over the last 8 weeks!

Online Support for parents /carers:



The CLCH oral health team are providing online advice sessions for parents/carers on children's oral health via MS Teams or telephone. Parent's support service is offered daily, **15 minutes slot** available via advance email booking. Please book an appointment via clcht.ohp@nhs.net.

We look forward to welcoming you back on Monday 2nd November.

We want to support our community in these challenging times. Please let us know if you would like us to mention your business or community projects.

To notify us of allergies or medical needs e-mail

Charlene.o'brien@barlby.rbkc.sch.uk

Charlene can also help with admissions.

To change your contact details and provide us with two contact numbers:

Siobhan.murphy@barlby.rbkc.sch.uk

All other enquiries:

info@barlby.rbkc.sch.uk

Christmas.

Traditionally, Barlby has a whole school production at Christmas time and the event is extremely well attended. We usually welcome 600 family members over 2 days. The whole school performs together. Sadly, this will not be possible this year due to covid but every class will be filmed singing/acting in their bubble. All the clips will then be put together to create a virtual production. We are determined to celebrate the festive season safely and will share the production with you when it is completed in December.

You are encouraged to e-mail your child's class teacher directly. They check their e-mails regularly. Stay in touch!

Have a lovely half term!

