

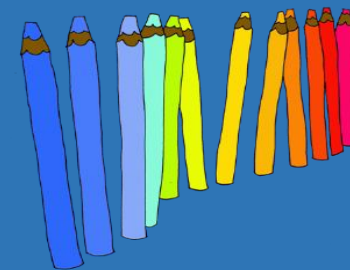
Secondary Transfer

September 2025

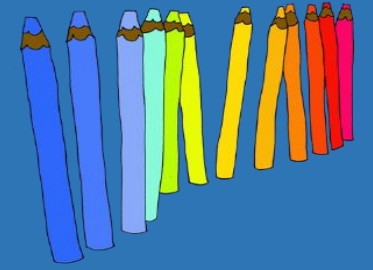
Apply online:
**[www.rbkc.gov.uk/
school-admissions](http://www.rbkc.gov.uk/school-admissions)**

The Pan-London eAdmissions site
opens on Monday 1 September 2025.

If your child was born between
1 September 2014 and 31 August
2015, you will need to apply
for a secondary school
place by Friday 31
October 2025.



The benefits of applying online



- It is quick and easy to do.
 - You can apply from any location with internet access 24 hours a day, seven days a week up until the closing date, **Friday 31 October 2025**.
 - You can log back on to change or delete preferences up until 11.59pm on the closing date.
 - You will automatically receive a confirmation email with a reference number once you submit your application.
 - You are able to attach additional documents.
 - During the evening of **Monday 2 March 2026**, you will be sent an email informing you that your outcome is available.
 - Once you have received this email, you can log onto the Pan-London eAdmissions website to accept or decline your offer.
- If you would prefer to complete a paper application form, please contact the Admissions Team.

You can apply for up to six schools

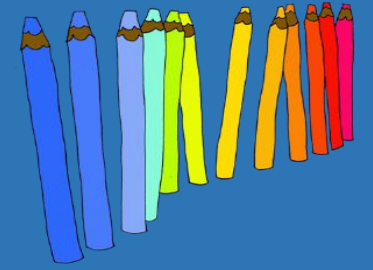
Please remember that you can apply for up to six schools. Even after you have researched the schools and you have decided where to apply, unless you are confident that your child will be offered a place (for example there will be a brother or sister on roll and the school lists this as a priority in the criteria), you should not assume that your child will be offered a place. You should also consider other schools where you know you will have a good chance of gaining a place.

Adding further schools to your list will not affect your chances of being offered a place at a higher preference school. Schools are not informed of other preferences you have made or the order you place them.

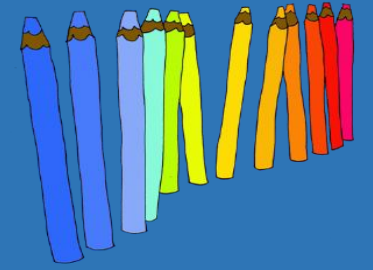
Take special care how you order your preferences

The school preferences you make are treated equally. This means that no matter where you place a school in your list of preferences, it will be treated in the same way as all other applicants who also chose that school – regardless of where they have placed the school in their list.

It is important that you list schools in the order of your preference. The reason for this is because if more than one offer of a school is returned to us, you will be offered the school that is listed the highest. For example if preference two, three and four are returned as 'Offer', only preference two will be offered. Preference three and four offers will be withdrawn and put back in the coordinated system for other applicants. Your child's name will be placed on a waiting list for preference one as this school could not make an offer.



Making your choice



Consider...

- Your child's needs
- Admission criteria of each school
- What the school offers
- Distance and travelling options
- What pupils and parents think of the school
- Results
- Latest Ofsted

Tip: Visit as many schools as you can AND check out their websites

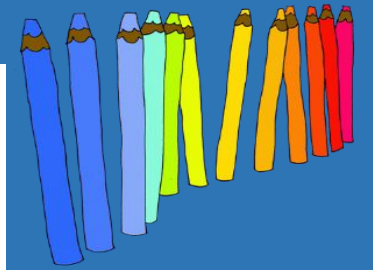
Research, research, research!

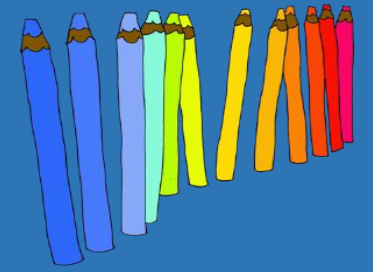
If you have not already done so, you must research the schools that you are interested in applying to.

You can do this by:

- Reading the admission criteria to find out if your child is likely to be offered a place, and look at how places were offered in the previous year.
- Attending open days/evenings held at the schools. The dates and times are included in this leaflet.
- Checking if the schools you want to apply to require your child to take a test.
- Checking if the school requires additional forms to be completed (this would normally apply to faith schools).

- Speaking to your primary school head teacher. They will have experience based on previous transfers and the schools their pupils were offered.
- Contacting the Admissions Team for advice if you are unclear on how the system works. You will find contact details on the back cover of this leaflet.





You must submit your application on time

You must submit your application by **Friday 31 October 2025**. If you submit your application after this date without a valid reason, your application will be considered after all of those which were submitted on time. This will greatly affect your chances of being offered the school you want.

Will I definitely be offered one of my preferences?

You might not be offered one of your preferences, but to increase your chances of being offered one of your preferred schools, you must research the admission criteria for the schools you are interested in.

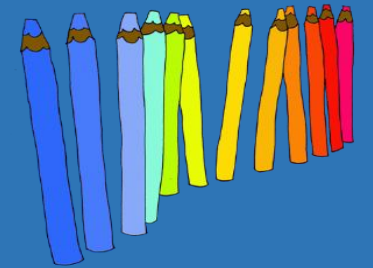
You should put at least one school in your list where you are reasonably certain your child meets the criteria.

What happens to the preferences that I have not been offered?

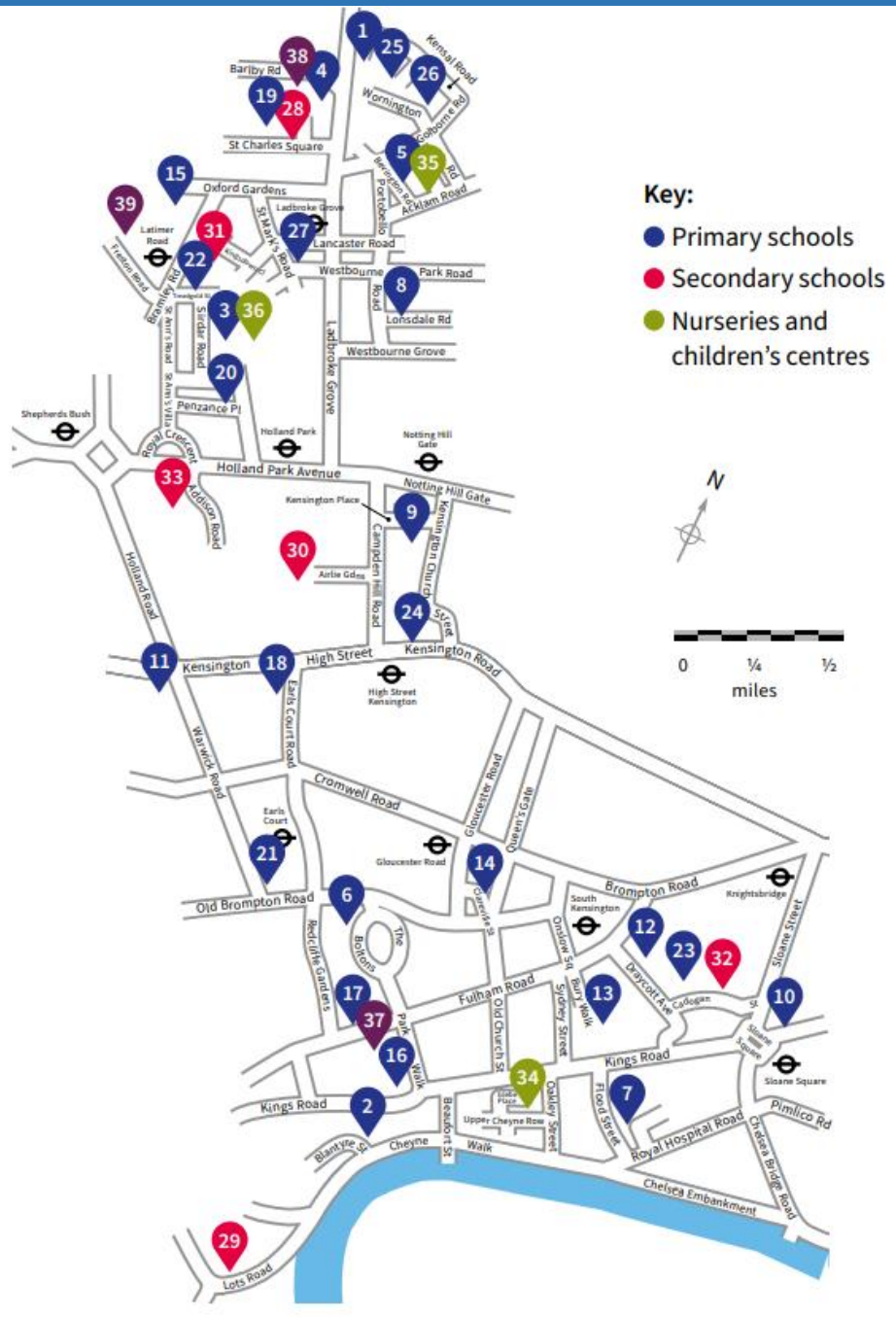
Any preferences lower than the offered school will be withdrawn as these schools would have been placed back into the coordinated system and offered to other applicants.

You will automatically be placed on the waiting list for higher preference schools that were not able to offer your child a place. You also have the right of appeal to an Independent Appeal Panel against the decision not to offer your child a place at your preferred school/schools.

<https://www.rbkc.gov.uk/children-and-education/school-admissions/starting-secondary-school>



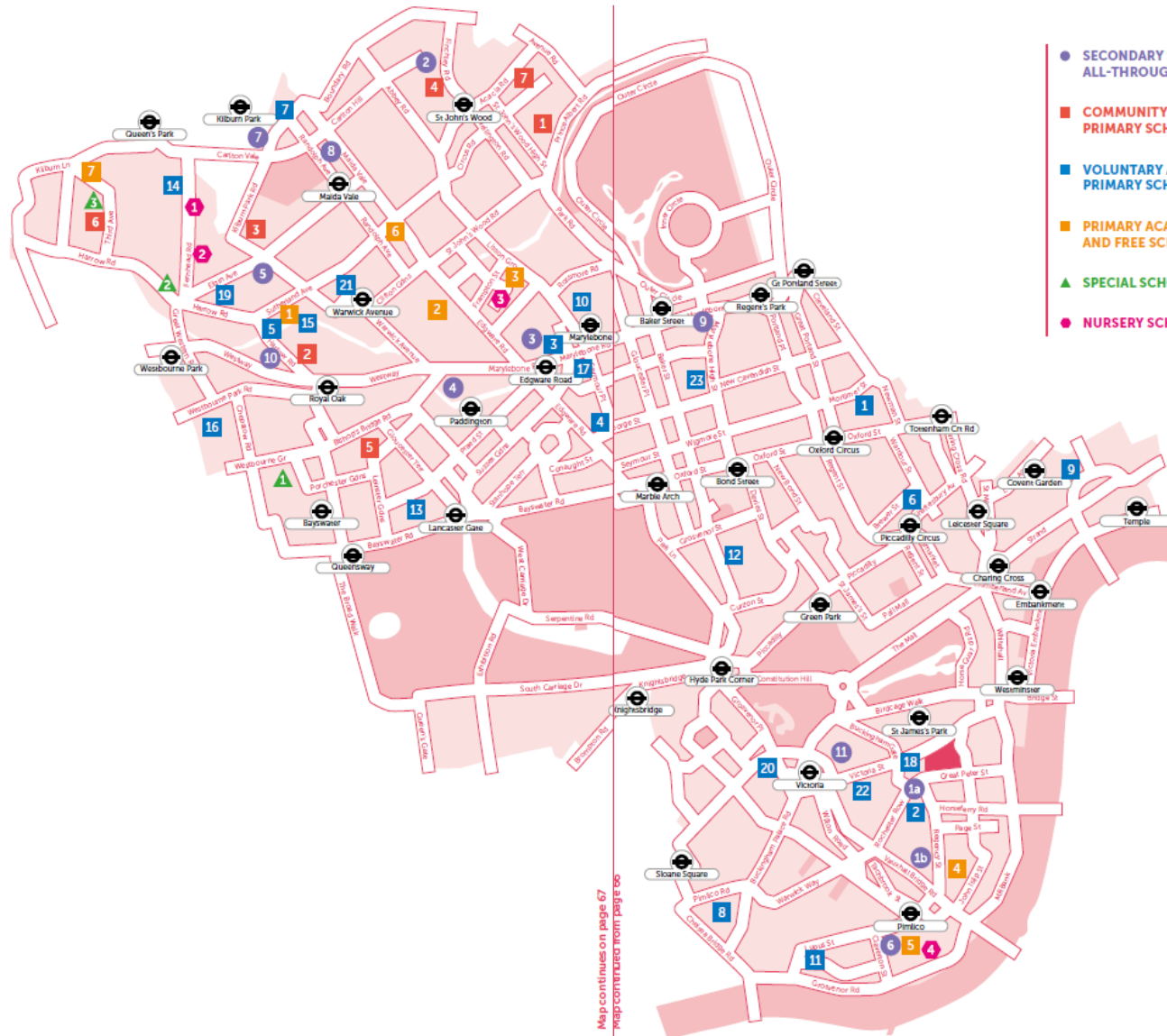
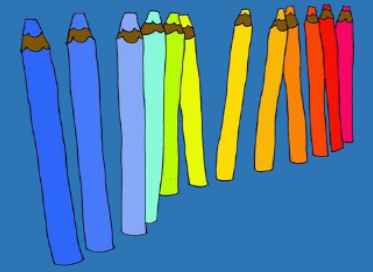
RBKC



Secondary schools

- 28 All Saints Catholic College (mixed)
- 29 Chelsea Academy (mixed)
- 30 Holland Park School (mixed)
- 31 Kensington Aldridge Academy (mixed)
- 32 St Thomas More Language College (Catholic, mixed)
- 33 The Cardinal Vaughan Memorial School (Catholic, boys)

Westminster

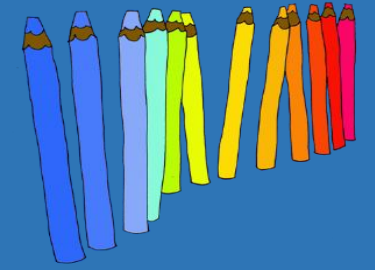


Map continues on page 67
map continues from page 66

- SECONDARY SCHOOLS AND ALL-THROUGH SCHOOLS
- COMMUNITY PRIMARY SCHOOLS
- VOLUNTARY AIDED PRIMARY SCHOOLS
- PRIMARY ACADEMIES AND FREE SCHOOLS
- ▲ SPECIAL SCHOOLS
- NURSERY SCHOOLS

- **SECONDARY SCHOOLS**
1. **The Grey Coat Hospital**
☎ 020 7969 1998
a. Lower School (7–9)
St. Andrew's Building,
Greycoat Place, SW1P 2DY
b. Upper School (10–13)
St. Michael's Building,
98 Regency Street, SW1P 4GH
 2. **Harris Academy**
St. John's Wood
☎ Marlborough Hill, NW8 0NL
☎ 020 7722 8141
 3. **King Solomon Academy**
All-through School
(Secondary phase*)
☎ Penfold Street, NW1 6RX
☎ 020 7563 6900
 4. **Marylebone Boys' School**
☎ North Wharf Road, W2 1QZ
☎ 0203 143 7100
 5. **Paddington Academy**
☎ Marylands Road, W9 2DR
☎ 020 7479 3900
 6. **Pimlico Academy**
☎ Lupus Street, SW1V 3AT
☎ 020 7828 0881
 7. **St. Augustine's CE High School**
☎ Oxford Road, NW6 5SN
☎ 020 7328 3434
 8. **St. George's Catholic School**
☎ Lanark Road, Maida Vale,
W9 1RB
☎ 020 7328 0904

9. **The St. Marylebone CE School**
☎ 64 Marylebone High Street,
W1U 5BA
☎ 020 7935 4704
10. **Westminster Academy**
☎ 255 Harrow Road, W2 5EZ
☎ 020 7121 0600
11. **Westminster City School**
☎ 55 Palace Street, SW1E 5HJ
☎ 020 7963 6300



Secondary schools

- 28** All Saints Catholic College (mixed)
- 29** Chelsea Academy (mixed)
- 30** Holland Park School (mixed)
- 31** Kensington Aldridge Academy (mixed)
- 32** St Thomas More Language College (Catholic, mixed)
- 33** The Cardinal Vaughan Memorial School (Catholic, boys)

