



# Barlby Primary School Newsletter 1

Friday 19th September

## In this edition of Barlby Primary School News:

- **A Note from the Headteacher**
- **Monty's Moments**
- **School Procedures**
- **Term Dates 2025/2026**
- **Attendance and punctuality**
- **Road Safety**

- **Phonics at Barlby**
- **The Hub in Action**
- **The Mainstream SEN Hub information**
- **A Story in Photos**

## A Note from the Headteacher



*Dear Parents & carers,*

*Welcome to Issue 1 of the 2025-2026 sway newsletter. In addition to our regular communications we issue a newsletter focused on specific areas of our school and in this addition you will read about the Early Years Foundation Stage and our newly opened 'Hub' provision.*

*We are now three weeks into the new school year and our new children have settled brilliantly into "big school" and our older children have adapted to their new classes with impressive ease and focus. In the weeks ahead we will be in touch about enrichment opportunities, parent workshops and open mornings. I hope you enjoy this addition and please do not hesitate to get*

*in touch if you would like an update or support. You can find key e-mail addresses on the school website and on your child's class page.*

*With best wishes,*

Anthony Mannix

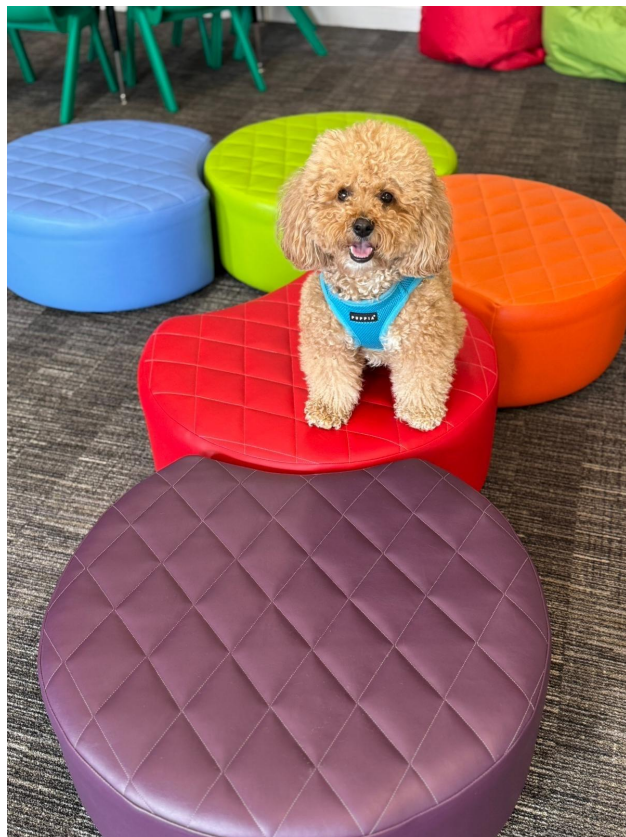
Headteacher

# Monty's Moments



*Montgomery (Monty) is our Headteacher's poochon- his mummy is a bichon frise and his daddy is a poodle which means that he is hypoallergenic and does not drop hair or cause allergies. Monty is in school on a very regular basis and many of you will have met him already- for others he may be a new friend to meet.*

*Research has shown that having a pet in school helps teach children empathy, respect, kindness, responsibility and friendship. Our aim is to support children's wellbeing and mental health by allowing the opportunity to spend time with Monty in small groups around the school. He is always on a lead in corridors when the children are present and he loves to watch school life from the school office table! We hope you enjoy getting to know him.*





## School Procedures

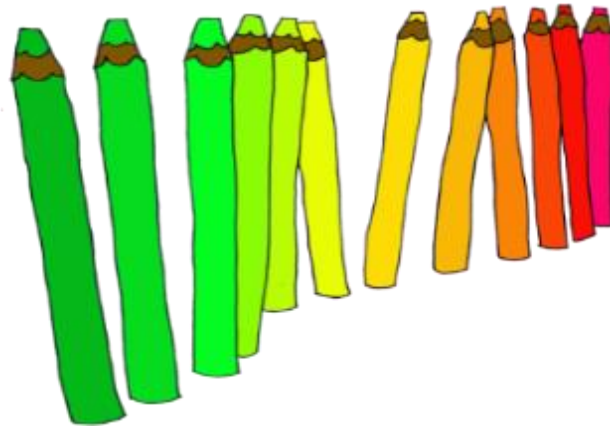


***Please see below for some gentle reminders regarding our school procedures:***

- *Children going home alone: please inform the teacher and school office by email.*

- *If your child is going to be absent: please inform the school office in the morning of the absence.*
- *Appointments: please make these out of school, if this is not possible a letter or text must be given to the school office.*
- *Please note that school starts between 8.30- 8.40am, please make sure your child/children arrive on time. **If they are late you must sign them in at the office.***
- *Late pick up: please inform the school if you know you are going to be late collecting your child/children. Please let the office staff know you have arrived to collect your child/children.*
- *Breakfast Club starts at 7.45am, please do not arrive before this time. You can book up to 7:30am on the day you need Breakfast club. All payments made via Schoolcomms.*
- *School Meals, please note children cannot change from meals to Packed Lunches daily, the kitchen order in food taken from what the children have signed up to.*

## Term Dates 2025/2026



### TERM DATES 2025/2026

#### AUTUMN TERM

**Inset Day (closed to pupils):** Monday 1st September

**Half Term 1:** Tuesday 2nd September – Wednesday 22nd October

**Inset Days (closed to pupils):** Thursday 23th & Friday 24th October

**Half Term Holiday:** Monday 27th October – Friday 1st November

**Half Term 2:** Monday 3rd November – Friday 19th December

**Christmas Holiday:** Monday 22nd December – Friday 2nd January

## **SPRING TERM**

**Inset Day (closed to pupils):** Monday 5th January

**Half Term 3:** Tuesday 6th January – Friday 13th February

**Half Term Holiday:** Monday 16th February – Friday 20th February

**Half Term 4:** Monday 23rd February – Friday 27th March

**Easter Holiday:** Monday 30th March – Friday 10th April

## **SUMMER TERM**

**Half Term 5:** Monday 13th April – Friday 22nd May

**May Day Bank Holiday (school closed):** Monday 4th May

**Half Term Holiday:** Monday 25th May – Friday 29th May

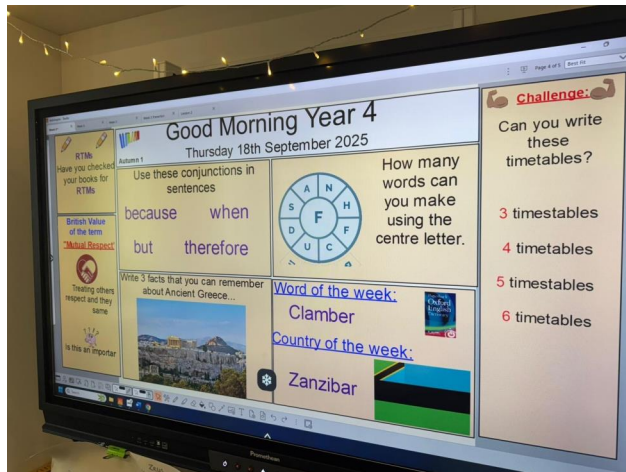
**Half Term 6:** Monday 1st June – Thursday 16th July

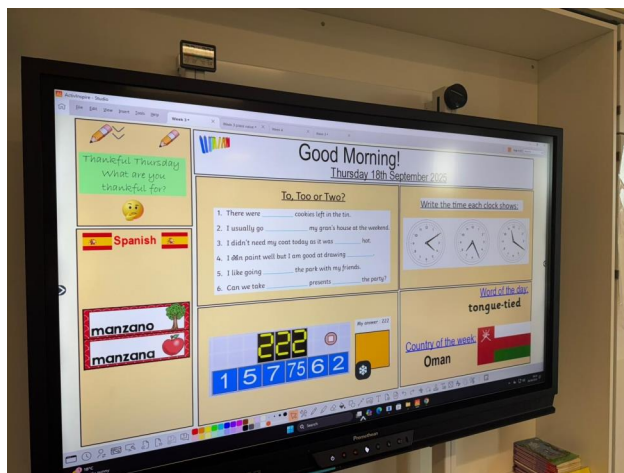
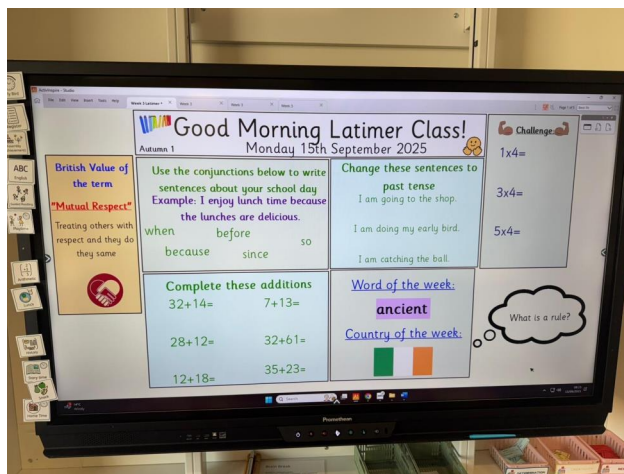
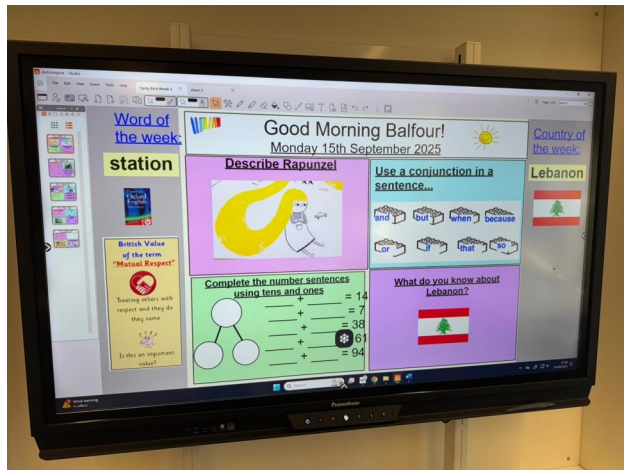
**Inset Day (closed to pupils):** Friday 17th July

[Click here for Term Dates on our Website](#)

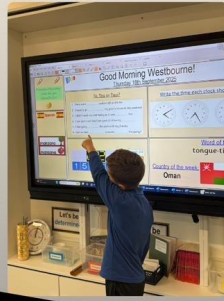
## Attendance & Punctuality

Attendance from start of academic year up until Thursday 18 <sup>th</sup> September 2025		
Our aim for every child is for their attendance to be 95% or above		
Whole School – 91.4%		
Without Nursery (non-statutory school age) – 92.4%		
Nursery	82.4%	
	87%	
Reception	Peabody – 86.6%	Sutton – 88.1%
	92.9%	
Year 1	Bruce – 95%	Golborne – 91.9%
	92.8%	
Year 2	Balfour – 97.6%	Burleigh – 90.9%
	95.2%	
Year 3	89.8%	
	Treverton – 88.4%	Dalgarno – 90.5%
Year 4	91.5%	
	Ladbroke – 98.6%	Westbourne – 86.8%
Year 5	94%	
	Portobello – 94.4%	Trellick – 91.7%
Year 6	93.4%	
	Apple Tree – 85.8%	Pears – 94.1%
Orchard		

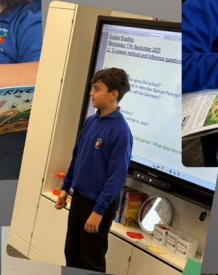


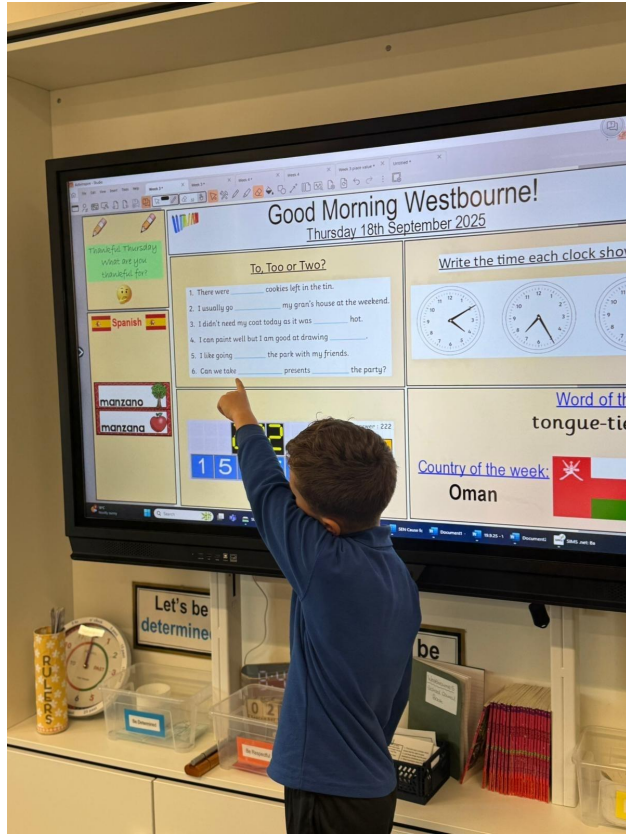




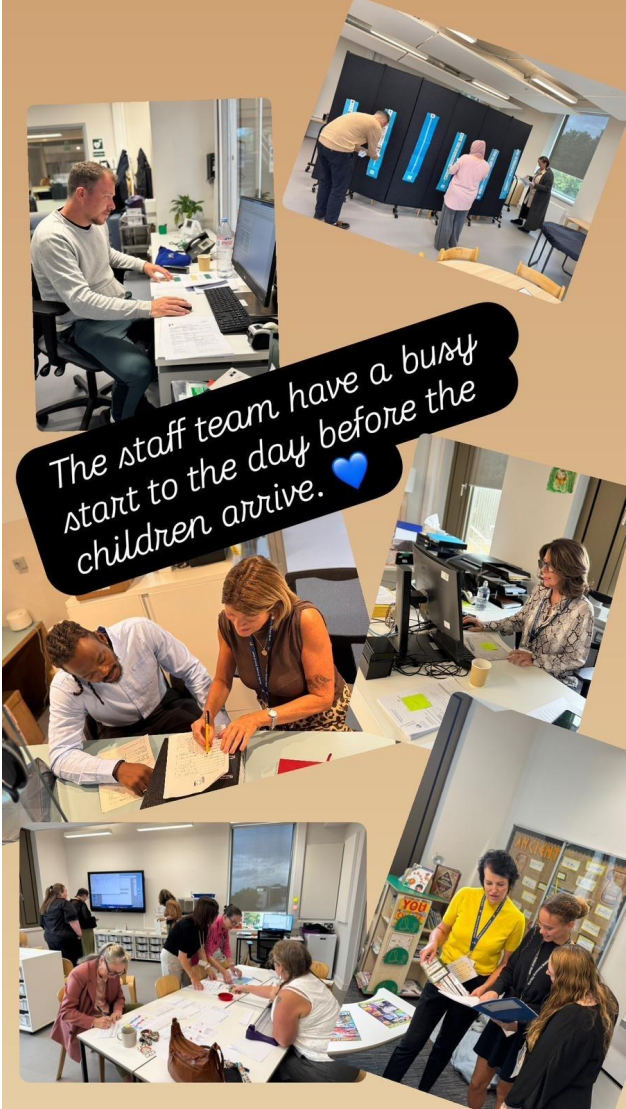


So much learning happens before 9am! 











Well done to Year 3 who continue to exceed our school's attendance target of 95%! And well done to the **214** pupils who have had 100% attendance so far!

***DfE penalty notice consideration threshold***

***(10+ unauthorised absences in 10 rolling school weeks)***

- ***27 pupils currently meet the threshold***
- ***1 pupil previously met the threshold between 01/09/2025 and 18/09/2025***

**Attendance Rewards**

During Achievement Assembly on a Friday mornings, the class with the highest attendance from the previous week is shared. The reward for the class with the highest attendance is to wear non-uniform one day the following week. This week, the winning class is **Ladbroke 5**. Well done!

**Why is attendance and punctuality important?**

**Good attendance and punctuality are vital if children are to do their best and make good progress.**

A child's time in school is very important as it impacts upon the following:

- their learning
- their friendships
- their self-esteem and confidence

It is, therefore, vital that every child attends school every day.

Our attendance target is **95%** for the coming year. We really want to meet this.

If your child has only 90% attendance, it means they miss:

- one half day each week
- nearly four weeks each school year
- ***over one school year in a school career***

Research shows that children are much more likely to meet age-related expectations if they have high levels of attendance at school, and we aim to promote this from the very start of their school career. This encourages children to form positive attitudes from a young age, which will influence their approach to work and life in later years. If children understand how important good attendance and punctuality is, they will achieve more in school and will develop good habits for the future.

### **What are our expectations?**

**It is statutory for children who are age 5 or older to attend school.**

This means that all the children in our Key Stage 1 and 2 classes, and the children in our Reception classes who have already had their fifth birthday, must come to school every day. The Government's minimum standard for a primary school's attendance is 95% and our attendance target is 95% or over. We also work hard to encourage all the 3 and 4 year old children who attend our Nursery and Reception classes to come to school every day.

If your child is ill, please contact the School Office by 8:00am on the day of absence and explain exactly what is wrong with your child. Please make sure you phone school every day your child is absent unless you have been given a sick note and have a date for return. If an absence is not reported by a Parent/Carer, then we are duty bound to investigate, and if no reason is given then it becomes an unauthorised absence.

Holidays in term time are not permitted, and the school complies with the national and RBKC policies relating to unauthorised absences.

### **What are the Department for Education's expectations on parents and schools?**

It is the legal responsibility of every parent to make sure their child receives that education either by attendance at a school or by education otherwise than at a school. Parents have an additional legal duty to ensure their child attends that school regularly. This means their child must attend every day that the school is open, except in a small number of allowable circumstances such as being too ill to attend or being given permission for an absence in advance from the school.

The DfE '*Working together to improve school attendance*' guidance is now statutory. We will be working together as a community to improve our attendance this year and reach our target of 95%. This statutory guidance outlines the expectations for schools and what actions to take when there are concerns over attendance.

Schools are expected to:

- develop and maintain a whole school culture that promotes the benefits of high attendance and is an integral part of the school's ethos;
- have a clear school attendance policy that all staff, pupils and parents understand. This policy should be easily accessible to leaders, staff, pupils and parents;
- accurately complete admissions and attendance registers and have effective day-to-day processes in place to follow up when absence occurs;
- regularly monitor and analyse attendance and absence data to identify pupils or cohorts that require support with their attendance. Effective strategies then need to be put in place;
- build strong relationships with families, seek to understand the barriers to attendance and work with families to help remove these. Schools should treat all pupils and parents with dignity. This supports the recognition that poor attendance is habitual and prevention and early intervention is critical;
- share information and work collaboratively with other schools in the area, local authorities, and other partners when absence is at risk of becoming persistent or severe.

You can find the document referenced here:

[https://assets.publishing.service.gov.uk/media/66bf300da44f1c4c23e5bd1b/Working\\_together\\_to\\_improve\\_school\\_attendance\\_-\\_August\\_2024.pdf](https://assets.publishing.service.gov.uk/media/66bf300da44f1c4c23e5bd1b/Working_together_to_improve_school_attendance_-_August_2024.pdf)

## Punctuality

**At Barlby, we have a 'soft start' to the day and all children are expected to be in school between 8:30am - 8:40am. Children need to be in class and ready to learn by 8:40am – this is when the learning starts.**

Any child arriving at school after 8:40am is recorded as late and parents are required to give reasons for lateness. We are working hard to improve our punctuality as a school. If a child is late frequently, a meeting will be arranged to discuss how we can support the family. If there is no improvement, we will consider a referral to Early Help. Please note that referrals to Early Help for attendance and punctuality concerns do not need parental consent, although we will always discuss this with you first:

### ***“Agreement Details for School Attendance Referrals***

*If you are referring for attendance reasons, although we do not need parental agreement, it is still best practice to seek agreement and if it is not given, inform the parent/guardian that you will need to referral to the Early Help Service. We will then work with you to try and engage the parent/carer and pupil in appropriate support to increase attendance.”*

You can find information about Early Help here:

[https://www.rbkc.gov.uk/kb5/rbkc/fis/advice.page?id=5wFBOZHQR\\_8](https://www.rbkc.gov.uk/kb5/rbkc/fis/advice.page?id=5wFBOZHQR_8)

## Drop off and collection arrangements reminder

Drop-off:

- Gates open at 8:30am and **close promptly at 8:40am** – children need to be in class and **ready to learn by 8:40am**. If you arrive after 8:40am, you need to sign your child in late at the office, stating the reason why you are late.
- Only parents of Year 1 are able to bring their children to class – **parents/carers of children in Year 2 to 6 must drop their children at the door and not enter the building unless this has been arranged (for example, a child with an additional need).**
- Parents/carers of children in the Orchard **only** drop off their children at the main entrance.

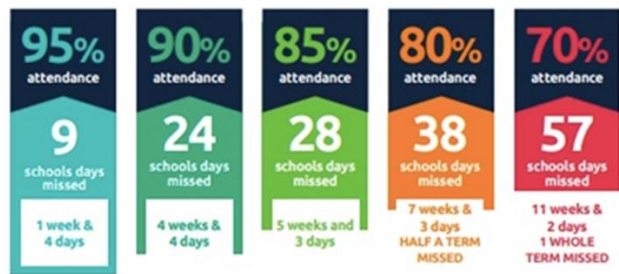
Collection:

- The EYFS gate (by the main entrance) will be opened at 3:05pm. Please collect your child/children and make your way to the main gate if you have children in older year groups.
- The main gate will open at 3:10pm. If you are collecting children in Year 1 -3, please follow the one-way system and enter via the door by the main hall and use the stairs by the main entrance. Once you've collected your child/children, please make your way down the stairs at the opposite end of the corridor – **please do not leave via the main entrance.**
- If you have children in Year 4-6, please collect them from the playground and leave via the main entrance.

Attendance from start of academic year up until Thursday 18 <sup>th</sup> September 2025		
Our aim for every child is for their attendance to be 95% or above		
Whole School – 91.4%		
Without Nursery (non-statutory school age) – 92.4%		
Nursery	82.4%	
Reception	87%	
	Peabody – 86.6%	Sutton – 88.1%
Year 1	92.9%	
	Bruce – 95%	Golborne – 91.9%
Year 2	92.8%	
	Balfour – 97.6%	Burleigh – 90.9%
Year 3	95.2%	
	89.8%	
Year 4	91.5%	
	Treverton – 88.4%	Dalgarno – 90.5%
Year 5	94%	
	Ladbroke – 98.6%	Westbourne – 86.8%
Year 6	93.4%	
	Portobello – 94.4%	Trellick – 91.7%
Orchard	93.4%	
	Apple Tree – 85.8%	Pears – 94.1%



## Every day in school counts...



## Road Safety



Thank you for your support and encouragement regarding the challenging parking and traffic situation. We know that closing the estate gate has been unpopular with some drivers but we are celebrating the fact that our children have been safer and we have not experienced any near misses or accidents.

Phonics at Barlby

# phonics









## Phonics

Nursery, Reception, Year 1 and Year 2 have started their Phonics learning following the Little Wandle Scheme of learning .

Nursery are enjoying their Rhyme Time sessions, they have loved learning and singing the Nursery rhyme “A Sailor Went to Sea.”

## Reception

This week Reception started their Phonics learning. They have learnt to read and write the sounds: “s”, “a”, “t” and “p.”

Please see the progression for this half term below: (Red table)

## Year One

Year One have started their Phonics learning this half term with consolidation of previous learning. Please see the progression for this half term below: (Blue table)

	Phase 3/4 review + four Phase 5 GPCs	Review tricky words
Week 1	Review Phase 3 GPCs ai ee igh oa oo ar or ur oo ow oi ear	Phases 2-4: the put* pull* full* push* to into I no go of he she we me be was you they all are my by sure pure said have like so do some come love were there little one when out what says here today
Week 2	air er /z/ s -s -es words with two or more digraphs e.g. queen thicker	
Week 3	Phase 4: CVCC CCVC CCVCC CCCVC Phase 4 with long vowels	
Week 4	<b>Phase 5</b> /ai/ ay play /ow/ ou cloud /oi/ oy toy /ee/ ea each	
Week 5	Review longer words	





	Phase 2 graphemes	New tricky words
Week 1	s a t p	
Week 2	i n m d	
Week 3	g o c k	is
Week 4	ck e u r	I
Week 5	h b fl	the

## *The Hub*

### The Hub

We are excited to share information about our Mainstream SEND Hub, designed to support children with a variety of Special Educational Needs and Disabilities from Nursery through to Year 6. This programme aims to ensure that all students receive the tailored support they need to thrive in their learning journey. Our Hub focuses on fulfilling key areas of the Education, Health, and Care (EHC) plans, providing access to quality teaching, promoting independence, and enhancing social communication skills. The Mainstream SEND Hub consists of two dedicated classrooms—one for Early Years/Key Stage One and another for Key Stage Two—along with flexible interventions that take place within mainstream classes.

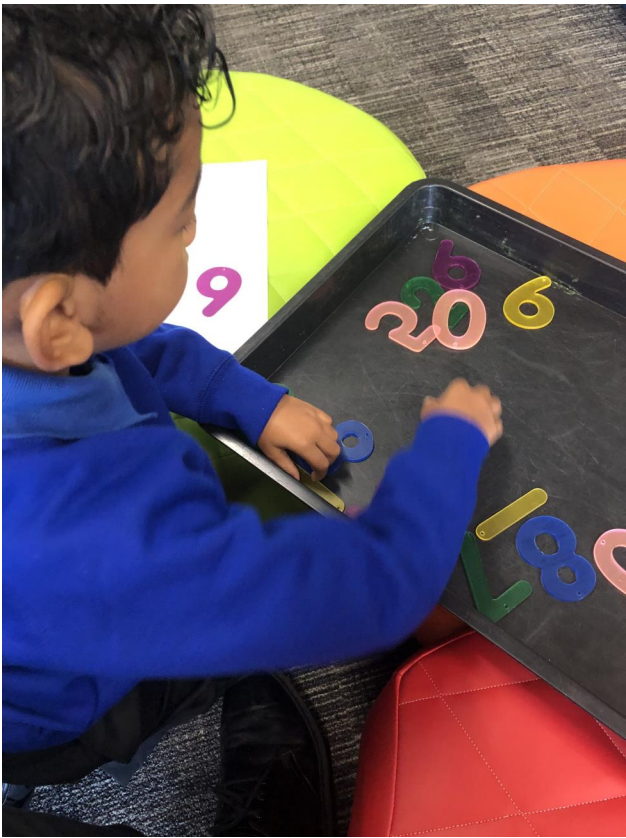


























## The Mainstream SEN Hub at Barlby Primary School

### **Purpose**

The mainstream hub addresses the need of the school to support children with Education, Health, and Care (EHC) plans across mainstream, providing access to quality teaching, promoting independence, fostering social communication skills and scaffold their development in their mainstream classrooms.

### **What will we be doing?**

Children who have been selected to be part of The Mainstream Hub will have access to additional resources to support their learning needs:

- Tailored intervention lessons conducted in a low-arousal environment by Hub Class Teachers.
- Sensory support.
- Practical and life skills.
- Social communication support.

### **How?**

To achieve an all-encompassing approach to support our children we will use:

- Colourful semantics
- Zones of regulation
- Social stories
- Attention Autism
- Curiosity box
- Sensory story
- Visual scaffolding

### **What will the Mainstream SEND Hub be like?**

- It will be an integral part of the mainstream school with Inclusivity at its core following our core values of Respect, Creativity and Determination.
- It will be managed and staffed by the school, with the Royal Borough of Kensington and Chelsea providing funding, support, and ensuring the quality of the provision.
- A place where pupils can benefit from all the advantages of a mainstream environment, with added support such as smaller class ratios, experienced SEND trained staff and a tailored curriculum.
- Purposefully designed to provide the space and resources necessary to meet the needs of the students.
- A appropriately sized classroom within the school's current building with access to a sensory space, providing students with the opportunity to regulate and manage their emotions.
- Direct access to a secure outdoor space, offering opportunities to expand the learning environment and provide an additional space for emotional regulation outside the classroom.

## A Story in Photos...



1 - A Story in Pictures...

